



## Fallbarrow Holiday Park, Rayrigg Road, Windermere

- 2023 Aspire Holiday Lodge, 62ft x 22ft, 4 Bedrooms, Sleeps 10
- Light & Airy As Plenty Of Windows Throughout The Lodge
- Patio Doors Lead From The Lounge Onto The Decking Area
- \*\*ROOFTOP TERRACE HAS AMAZING VIEWS OF LAKE WINDERMERE\*\*
- Spacious Pitch, Large Decking Area With Amazing Views Of The Lake
- Fully Fitted With Lavish Furnishings Throughout
- Kitchen, Dining & Lounge Area's All Experience SUPERB LAKE VIEWS!
- Utility Room, Integrated Dishwasher, Washing Machine, Dryer And Fridge Freezer
- Just One Lodge Away From The Lake Shore!!
- Other Homes are Available on this Park, Contact Us for More Information & Prices

Contact Annette & Team Tempo **NOW**

**01772 633399**

**info@tempoleisure.co.uk**

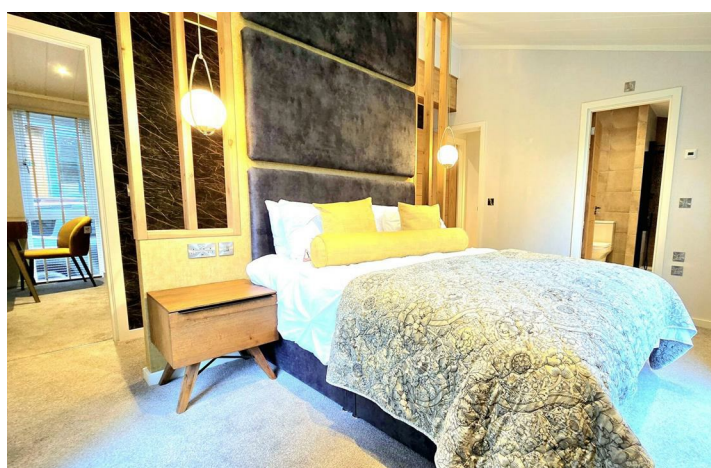
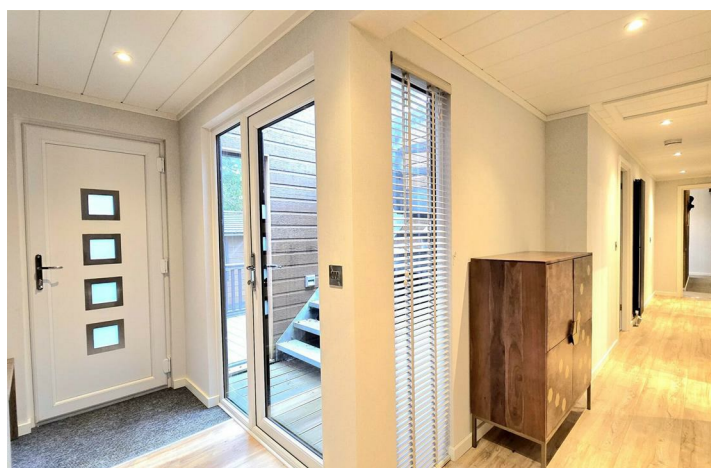
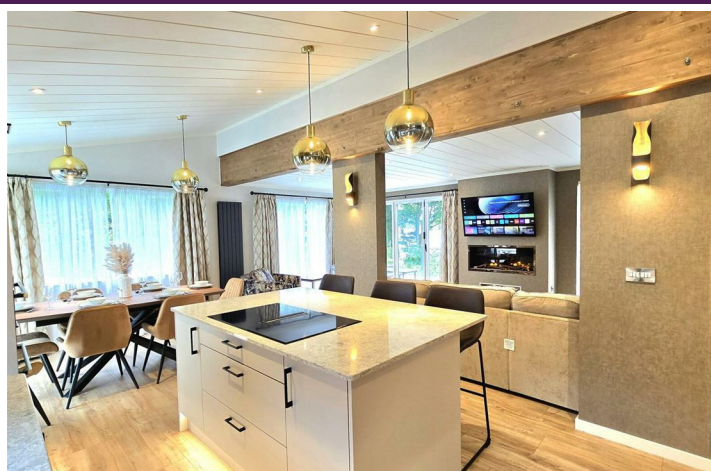
**www.tempoleisure.co.uk**



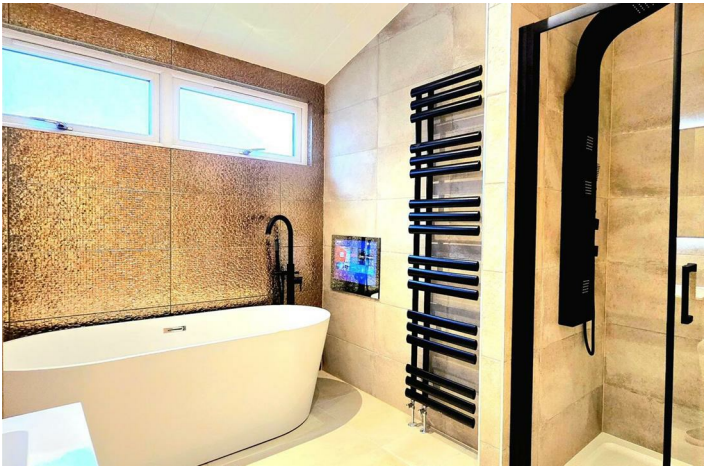
The Aspire Custom Lodge is so light & airy due to the amount of windows throughout. This super lodge has a large kitchen dining area and a separate utility room. There are four bedrooms in total, two are double's, one is a twin and one has bunk beds. The master bedroom has it's own en-suite with bath, shower & TV. The Master bedroom also has it's own dressing room with hanging rails, drawer's and plenty of storage space.

Main bathroom with bath, shower and TV.

There is a modern contemporary feel throughout this decadent lodge, it comes with fully fitted with lavish furniture and appliances including dishwasher, washing machine, ice maker and fridge freezer. This properties best feature without a doubt though has to be the view of the lake from the roof top terrace as it is just one lodge away from the lake shore. The town of Bowness-On-Windermere is just a short stroll away.









## Viewings

Viewings by arrangement only. Call 01772 633399 to make an appointment.



## Notice

Please note we have not tested any apparatus, fixtures, fitting or services. Interested parties must undertake their own investigation into the working order of these items. All measurements stated in this brochure are approximate and photographs provided are for guidance only. We are advised that the property is subject to site fees.

### Terms & Conditions Misrepresentation Act 1967:-

tempoleisure.co.uk looks to ensure that all our sales particulars are accurate and reliable, we believe the above details to be correct but their accuracy cannot be guaranteed and they do not constitute any part of an offer or contract. Any intending purchasers or lessees must satisfy themselves by inspection or otherwise as to the correctness of each statement in these particulars before entering into any formal contract to purchase this property.

### Arrange A Viewing

If you are interested in viewing a property through tempoleisure.co.uk please call our team on 01772 633399 or email [info@tempoleisure.co.uk](mailto:info@tempoleisure.co.uk)

### Property Listing

If you are thinking of selling your property tempoleisure.co.uk will be more than happy to help, please call our team on 01772 633399 or email [info@tempoleisure.co.uk](mailto:info@tempoleisure.co.uk)

Contact Annette & Team Tempo **NOW**

**01772 633399**  
**[info@tempoleisure.co.uk](mailto:info@tempoleisure.co.uk)**  
**[www.tempoleisure.co.uk](http://www.tempoleisure.co.uk)**